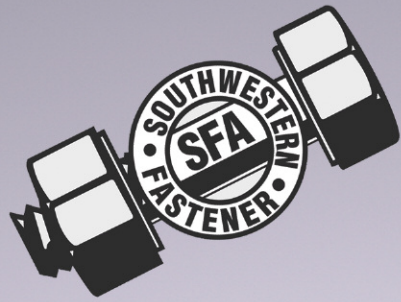


SEFA

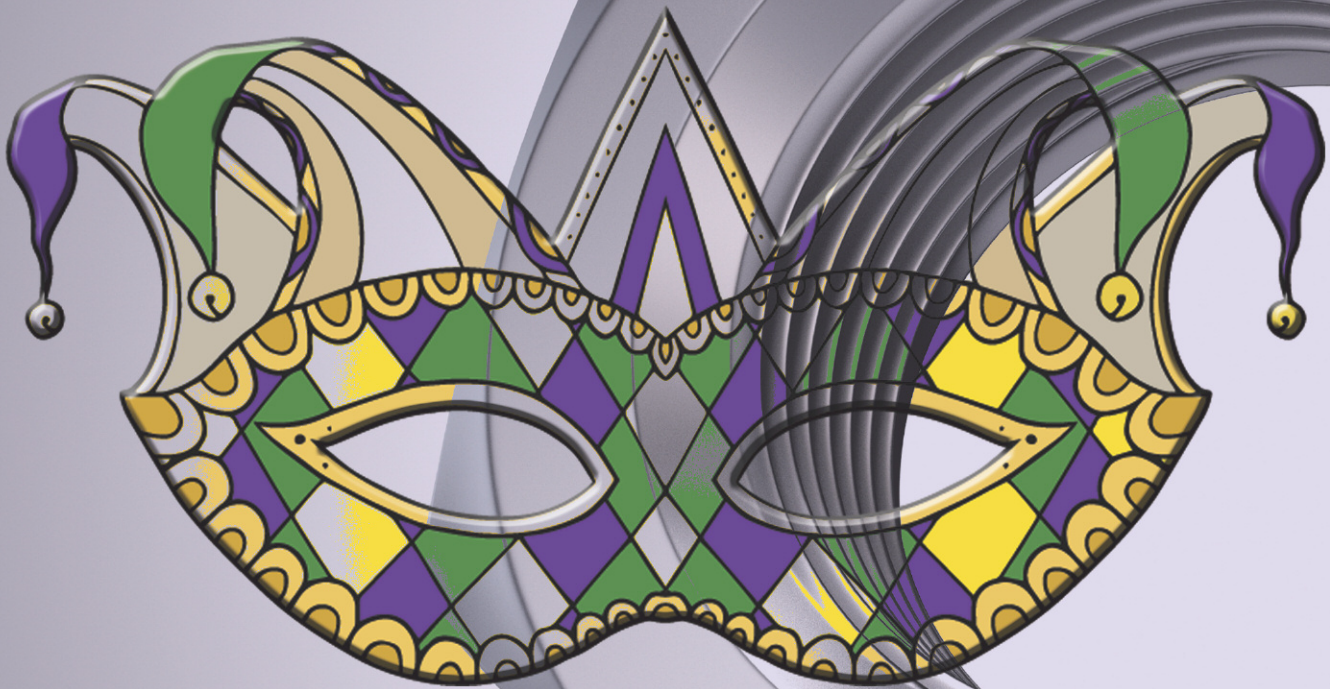
Southeastern Fastener Association

...in an industry which "holds the world together"



Annual Spring Conference

April 19-21, 2017 | New Orleans, LA



Business Meetings

Golf Opportunities

Social Events

Networking

"Big Easy" Fun

Table Top Show

Don't miss the endless opportunities offered as we host our Annual Spring Meeting at Astor Crowne Plaza, New Orleans, LA

Wednesday April 19th

12:00 p.m. – 2 p.m.	SEFA & SFA Board Luncheon
2 p.m.	Board Meetings
	Scholarship Committee Meeting
6:00 p.m. – 8:00 p.m.	Opening Reception featuring entertainment

Thursday April 20th

8:30 a.m.	Golf at English Turn Golf and Country Club
	Shot Gun Start
6:00 p.m.	Reception, Dinner, Awards, Silent Auction

Friday April 21st

8:00 a.m.	Continental Breakfast
8:30 a.m.	Member Business Meeting
9:00 a.m. – 10:30 a.m.	Panel Discussion Prospecting: Marketing, Selling and Buying <i>Supply Chain Management</i> Panel participants from both SEFA and SFA
10:45 a.m. – 11:45 a.m.	Panel Discussion Federal Reserve Presentation <i>Speaker: William Strauss</i>
12:00 – 1:00 p.m.	Lunch
1:00 p.m. – 4:00 p.m.	Table Top Show & Raffles



Book your room now at the Astor Crowne Plaza,
739 Canal St. @ Bourbon, New Orleans, LA 70130
(504) 962-0500

\$169 Single or Double (Cut off date for room reservations: Monday March 27, 2017 at 5 p.m.)

About Our Speaker

William A. Strauss works in the economic research department at the Federal Reserve Bank of Chicago, which he joined in 1982. His chief responsibilities include analyzing the current performance of both the Midwest economy and the manufacturing sector for use in monetary policy. He produces the monthly Chicago Fed Midwest Manufacturing Index and organizes the Bank's Economic Outlook Symposium and Automotive Outlook Symposium. In addition, he conducts several economic workshops and industrial roundtables throughout the year.



William A. Strauss

His research papers include analysis of the manufacturing sector, the automotive sector, and the trade-weighted dollar, business cycles and Federal Reserve payments operations. Strauss has been interviewed on numerous television and radio shows including Fully Threaded Radio and is regularly quoted in major business magazines and newspapers. He has also provided testimony concerning manufacturing issues to the U.S. Senate.



In a city internationally known for its authenticity, magnificent architecture and outstanding fare, English Turn Golf and Country Club stands out as an unmatched example of a luxurious environment with superb recreational facilities. This semi-private championship 18-hole golf course was personally designed and supervised by legendary golfer and golf course designer Jack Nicklaus. The course is designed to provide as exquisite a visual experience as it is a great golfing experience.

This Jack Nicklaus Signature Design, Par 72 Championship Golf Course presents a unique challenge to golfers of all skill levels. Every hole has an individual personality including numerous bunkers, large waste bunkers, plentiful grass depressions and mounds which line the sculpted fairways. The property was designed with meandering lakes surrounding the golf course giving a separation from the community and a magnificent Plantation Style Clubhouse making your visit at English Turn an unparalleled experience.

Golf Registration

Thursday, April 20th

8:30 a.m. Shot Gun Start

\$150 per player includes all greens fees, cart and lunch.

Please complete this form and return with your registration. Proper golf attire required.

Players Names/Company	Amount	Please check if sending separate form
_____	_____	_____ <input type="checkbox"/>
_____	_____	_____ <input type="checkbox"/>
_____	_____	_____ <input type="checkbox"/>
_____	_____	_____ <input type="checkbox"/>
	Total	_____

YES, Please list our company as a hole sponsor – **ADD \$100 per hole**

Your company's name will be listed as a sponsor in all event areas where possible.

PLEASE ATTACH THIS FORM TO THE CONFERENCE REGISTRATION FORM.

See insert pages for registration form, map and driving directions.

**English Turn Golf and Country Club
One Clubhouse Drive
New Orleans, Louisiana 70131
Phone: (504) 392-2200**



**Remember you don't
have to be a golfer to
sponsor a hole!**



CROWNE PLAZA®

NEW ORLEANS FRENCH QUARTER

Astor Crowne Plaza
739 Canal St. @ Bourbon
New Orleans, LA
(504) 962-0500

English Turn Golf and Country Club
One Clubhouse Drive
New Orleans, Louisiana 70131
Phone: (504) 392-2200



The Southeastern Fastener Association and Southwestern Fastener Association will be co-hosting a Spring Conference April 19th - 21st in New Orleans, LA. The two groups look forward to an expanded event allowing members from both groups as well as fastener friends to network in "The Big Easy."

The Crowne Plaza is located at the corner of Bourbon and Canal streets. Dating back to 1718, Bourbon Street is steeped in history, beauty and folklore. It's also the core of New Orleans' famous nightlife. Extending 13 blocks from Esplanade Avenue to Canal St., this famous stretch of road plays host to a number of historic sights, along with several iconic venues that make it a must-see for all travelers.

Anytime of year find live music, amazing Creole and Cajun cuisine, fresh seafood, farmers markets, shopping, nightlife, vibrant history and more. No matter the time of year, New Orleans' calendar overflows in celebration.

New Orleans is the birthplace of jazz. Original spirit of creativity and musical magic is alive on the streets and in the clubs of New Orleans. Experience unbelievable live musical performances in many of New Orleans venues. New Orleans is one big stage. Come and play your part.

It is an indisputable fact that no place loves its food quite as sincerely - or as indulgently - as New Orleans. Some people eat to live, but New Orleanians live to eat. As a result, the city offers one of the most incredible - and incredibly diverse - concentrations of exceptional dining and unforgettable cuisine in the world.

SFA and SEFA invite members and fastener friends to join them for a great event in a great location.

See Travel Info sheet for more details.

Southeastern Fastener Association
P.O. Box 473, Lake Zurich, IL 60047
847-370-9022 Fax 847-516-6728

E-Mail: sefa@thesefa.com
Website: www.thesefa.com

Southwestern Fastener Association
292 Sugarberry Circle, Houston, Texas 77024
713-952-5472 Fax: 713-952-7488

E-Mail: swfa@swbell.net
Website: www.sfa-fastener.org